

Sales History Report

Prepared on 17 Nov 2017

Kate Moxham
Mob: 0862463160
Email: admin@fngenesis.com.au

Sold Properties



14 Blackford Street Mount Hawthorn WA 6016

Sale Price: \$900,000

Sale Date: 24 Jun 2017

Area: 491m2

Attributes: 2 Beds, 1 Baths, 1 Car Spaces



19 Bondi Street Mount Hawthorn WA 6016

Sale Price: \$1,100,000

Sale Date: 17 Jun 2017

Area: 491m2

Attributes: 3 Beds, 2 Baths, 2 Car Spaces, 2 Lock Up Garages



18 Brady Street Mount Hawthorn WA 6016

Sale Price: \$410,000

Sale Date: 26 Jun 2017

Area: 833m2 Approx

Attributes: 2 Beds, 2 Baths, 1 Car Spaces

1/18 Brady Street Mount Hawthorn WA 6016

Sale Price: \$410,000

Sale Date: 26 Jun 2017

Area: 98m2

Attributes: 2 Beds, 2 Baths, 1 Car Spaces



3/18 Brady Street Mount Hawthorn WA 6016

Sale Price: \$415,000

Sale Date: 22 May 2017

Area: 105m2

Attributes: 2 Beds, 1 Baths, 1 Car Spaces, 1 Lock Up Garages



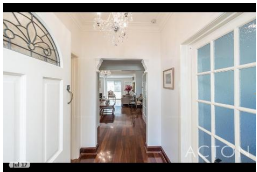
4/18 Brady Street Mount Hawthorn WA 6016

Sale Price: \$415,000

Sale Date: 13 Jun 2017

Area: 107m2

Attributes: 2 Beds, 1 Baths, 1 Car Spaces, 1 Lock Up Garages



54 Brady Street Mount Hawthorn WA 6016

Sale Price: \$685,000

Sale Date: 27 Jun 2017

Area: 407m2

Attributes: 3 Beds, 2 Baths, 2 Car Spaces, 1 Lock Up Garages



3/4 Britannia Road Mount Hawthorn WA 6016

Sale Price: \$420,000

Sale Date: 31 May 2017

Area: 145m2

Attributes: 2 Beds, 1 Baths, 1 Car Spaces, 1 Lock Up Garages



5B Coogee Street Mount Hawthorn WA 6016

Sale Price: \$1,005,000

Sale Date: 18 May 2017

Area: 3m2

Attributes: 3 Beds, 2 Baths, 2 Car Spaces, 2 Lock Up Garages, 1 Ensuites



20 Coogee Street Mount Hawthorn WA 6016

Sale Price: \$1,150,000

Sale Date: 14 Apr 2017

Area: 468m2

Attributes: 4 Beds, 2 Baths, 2 Car Spaces, 2 Lock Up Garages, 1 Ensuites



89 Coogee Street Mount Hawthorn WA 6016

Sale Price: \$800,000

Sale Date: 20 Apr 2017

Area: 488m2

Attributes: 2 Beds, 1 Baths, 1 Lock Up Garages



154 Coogee Street Mount Hawthorn WA 6016

Sale Price: \$792,500

Sale Date: 17 May 2017

Area: 488m2

Attributes: 2 Beds, 1 Baths, 2 Car Spaces, 1 Lock Up Garages



7/1 Dunedin Street Mount Hawthorn WA 6016

Sale Price: \$475,000

Sale Date: 25 May 2017

Area: 135m2

Attributes: 2 Beds, 2 Baths, 1 Car Spaces, 1 Ensuites



13/1 Dunedin Street Mount Hawthorn WA 6016

Sale Price: \$466,000

Sale Date: 22 Apr 2017

Area: 118m2

Eq. Building Area: 118.0m2

Attributes: 2 Beds, 2 Baths, 2 Car Spaces, 2 Lock Up Garages, 2 Ensuites



25 Dunedin Street Mount Hawthorn WA 6016

Sale Price: \$832,000

Sale Date: 16 Jun 2017

Area: 546m2

Attributes: 2 Beds, 1 Baths



28A Dunedin Street Mount Hawthorn WA 6016

Sale Price: \$780,000

Sale Date: 28 Jun 2017

Area: 301m2

Attributes: 3 Beds, 1 Baths, 2 Car Spaces, 2 Lock Up Garages, 1 Ensuites



69 Dunedin Street Mount Hawthorn WA 6016

Sale Price: \$780,000

Sale Date: 22 May 2017

Area: 453m2

Attributes: 2 Beds, 1 Baths, 1 Car Spaces, 1 Lock Up Garages



10/46 East Street Mount Hawthorn WA 6016

Sale Price: \$340,000

Sale Date: 29 May 2017

Area: 99m²

Attributes: 1 Beds, 1 Baths, 1 Car Spaces, 1 Lock Up Garages



59 Edinboro Street Mount Hawthorn WA 6016

Sale Price: \$799,000

Sale Date: 4 Jun 2017

Area: 445m²

Attributes: 3 Beds, 1 Baths, 2 Car Spaces, 1 Lock Up Garages



74 Edinboro Street Mount Hawthorn WA 6016

Sale Price: \$720,000

Sale Date: 7 Jun 2017

Area: 445m²

Attributes: 2 Beds, 1 Baths, 1 Car Spaces



79 Edinboro Street Mount Hawthorn WA 6016

Sale Price: \$1,065,000

Sale Date: 29 Jun 2017

Area: 445m²

Attributes: 4 Beds, 1 Baths, 2 Car Spaces, 2 Lock Up Garages



107 Edinboro Street Mount Hawthorn WA 6016

Sale Price: \$760,000

Sale Date: 31 May 2017

Area: 445m²

Attributes: 3 Beds, 1 Baths, 2 Car Spaces, 2 Lock Up Garages



23 Egina Street Mount Hawthorn WA 6016

Sale Price: \$772,000

Sale Date: 20 Apr 2017

Area: 491m²

Attributes: 2 Beds, 1 Baths, 2 Car Spaces, 1 Lock Up Garages



160 Egina Street Mount Hawthorn WA 6016

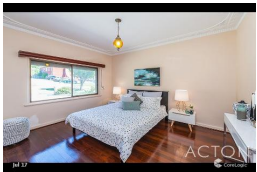
Sale Price: \$775,000

Sale Date: 30 May 2017

Area: 362m2

Eq. Building Area: 130.0m2

Attributes: 3 Beds, 1 Baths, 2 Car Spaces, 1 Lock Up Garages



92 Fairfield Street Mount Hawthorn WA 6016

Sale Price: \$852,000

Sale Date: 27 Apr 2017

Area: 445m2

Attributes: 3 Beds, 2 Baths, 2 Car Spaces, 2 Lock Up Garages



131 Fairfield Street Mount Hawthorn WA 6016

Sale Price: \$650,000

Sale Date: 23 Jun 2017

Area: 488m2

Attributes: 2 Beds, 1 Baths, 1 Lock Up Garages



144 Fairfield Street Mount Hawthorn WA 6016

Sale Price: \$630,000

Sale Date: 26 May 2017

Area: 445m2

Attributes: 2 Car Spaces, 1 Ensuites



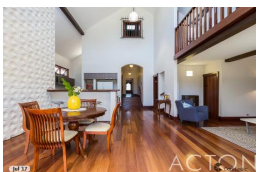
20 Federation Street Mount Hawthorn WA 6016

Sale Price: \$772,500

Sale Date: 27 Apr 2017

Area: 491m2

Attributes: 2 Beds, 1 Baths, 1 Car Spaces



63 Hobart Street Mount Hawthorn WA 6016

Sale Price: \$1,250,000

Sale Date: 15 May 2017

Area: 488m2

Attributes: 5 Beds, 1 Baths, 1 Car Spaces, 1 Lock Up Garages

115 Kalgoorlie Street Mount Hawthorn WA 6016

Sale Price: \$440,000

Sale Date: 6 Oct 2017

Area: 200m2

Attributes:



145 London Street Mount Hawthorn WA 6016

Sale Price: \$630,000

Sale Date: 12 Jun 2017

Area: 445m2

Attributes: 2 Beds, 1 Baths, 2 Car Spaces, 3 Lock Up Garages



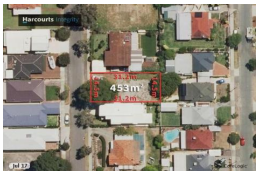
31 Lynton Street Mount Hawthorn WA 6016

Sale Price: \$905,000

Sale Date: 5 Jun 2017

Area: 387m2

Attributes: 3 Beds, 2 Baths, 2 Car Spaces



42 Lynton Street Mount Hawthorn WA 6016

Sale Price: \$650,000

Sale Date: 10 May 2017

Area: 453m2

Eq. Building Area: 241.0m2

Attributes: 2 Car Spaces, 2 Lock Up Garages, 2 Ensuities



62 Matlock Street Mount Hawthorn WA 6016

Sale Price: \$935,000

Sale Date: 9 Apr 2017

Area: 470m2

Attributes: 3 Beds, 1 Baths, 2 Car Spaces, 1 Lock Up Garages



7 Milton Street Mount Hawthorn WA 6016

Sale Price: \$1,250,000

Sale Date: 16 May 2017

Area: 541m2

Attributes: 4 Beds, 2 Baths, 1 Car Spaces, 1 Lock Up Garages, 1 Ensuities

1/49 Milton Street Mount Hawthorn WA 6016

Sale Price: \$710,000

Sale Date: 12 Apr 2017

Area: 294m2

Attributes:



369 Oxford Street Mount Hawthorn WA 6016

Sale Price: \$1,530,000

Sale Date: 19 Apr 2017

Area: 460m2

Attributes:



33 Purslowe Street Mount Hawthorn WA 6016

Sale Price: \$770,000

Sale Date: 4 Apr 2017

Area: 181m2

Attributes: 3 Beds, 2 Baths, 1 Car Spaces, 1 Lock Up Garages, 1 Ensuities



29 Sasse Avenue Mount Hawthorn WA 6016

Sale Price: \$755,000

Sale Date: 21 Jun 2017

Area: 377m2

Attributes: 3 Beds, 1 Baths, 1 Car Spaces



73 Sasse Avenue Mount Hawthorn WA 6016

Sale Price: \$855,000

Sale Date: 15 May 2017

Area: 377m2

Attributes: 3 Beds, 2 Baths, 2 Car Spaces, 1 Lock Up Garages

100 Scarborough Beach Road Mount Hawthorn WA 6016

Sale Price: \$90,000

Sale Date: 16 May 2017

Area: 696m2

Attributes:



147 Scarborough Beach Road Mount Hawthorn WA 6016

Sale Price: \$1,137,500

Sale Date: 23 May 2017

Area: 900m2

Attributes:



190 Scarborough Beach Road Mount Hawthorn WA 6016

Sale Price: \$455,000

Sale Date: 23 Jun 2017

Area: 1,307m2

Attributes: 1 Beds, 1 Baths, 1 Car Spaces, 2 Lock Up Garages, 1 Ensuites

12/190 Scarborough Beach Road Mount Hawthorn WA 6016

Sale Price: \$455,000

Sale Date: 24 Jun 2017

Area: 128m2

Attributes: 2 Beds, 2 Baths, 2 Car Spaces, 1 Ensuites



259 Scarborough Beach Road Mount Hawthorn WA 6016

Sale Price: \$3,850,000

Sale Date: 19 Jun 2017

Area: 395m2

Attributes:



7/42 Shakespeare Street Mount Hawthorn WA 6016

Sale Price: \$429,000

Sale Date: 22 Apr 2017

Area: 85m2

Attributes: 1 Beds, 1 Baths, 1 Car Spaces, 1 Lock Up Garages



15/42 Shakespeare Street Mount Hawthorn WA 6016

Sale Price: \$410,000

Sale Date: 7 May 2017

Area: 77m2

Attributes: 1 Beds, 1 Baths, 1 Car Spaces

Summary

Summary Sales History

	Quantity	Lowest Sale	Highest Sale	Median Value	Average	Total Value
BUSINESS	4	\$90,000	\$3,850,000	\$1,333,750	\$1,651,875	\$6,607,500
HOUSE	25	\$630,000	\$1,250,000	\$800,000	\$875,000	\$21,875,000
LAND	3	\$440,000	\$650,000	\$630,000	\$573,333	\$1,720,000
UNIT	15	\$340,000	\$780,000	\$429,000	\$485,000	\$7,275,000
TOTAL	47					\$37,477,500

Sales History By Property Attributes

		Quantity	Lowest Sale	Highest Sale	Median Value	Average Value
BUSINESS	N/A	4	\$90,000	\$3,850,000	\$1,333,750	\$1,651,875
HOUSE	2 Bed	10	\$630,000	\$900,000	\$776,250	\$764,900
	3 Bed	11	\$755,000	\$1,100,000	\$852,000	\$864,636
	4 Bed	3	\$1,065,000	\$1,250,000	\$1,150,000	\$1,155,000
	5+ Bed	1	\$1,250,000	\$1,250,000	\$1,250,000	\$1,250,000
LAND	N/A	3	\$440,000	\$650,000	\$630,000	\$573,333
UNIT	1 Bed	4	\$340,000	\$455,000	\$419,500	\$408,500
	2 Bed	8	\$410,000	\$475,000	\$417,500	\$433,250
	3 Bed	2	\$685,000	\$780,000	\$732,500	\$732,500
	N/A	1	\$710,000	\$710,000	\$710,000	\$710,000
TOTAL		47				\$797,393

Disclaimer

Whilst all reasonable effort is made to ensure the information in this publication is current, CoreLogic does not warrant the accuracy or completeness of the data and information contained in this publication and to the full extent not prohibited by law excludes all for any loss or damage arising in connection with the data and information contained in this publication.

Based on information provided by and with the permission of the Western Australian Land Information Authority (2017) trading as Landgate.